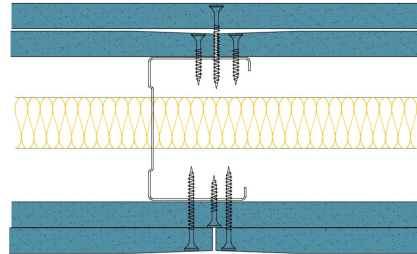


AS70-B-159(25) - SPEEDLINE System Data Sheet - Version V1 (24-10-23)

SPEEDLINE 70mm Acoustic 'C' Stud Partition
@600mm Ctrs, with 2x BG Gyproc 12.5mm
SoundBloc each side, 25mm APR



System Performance Breakdown

Fire Resistance:

BS476 Part 22:1987:

Test Ref & Date or Applied Ref & Report:

Max Height:

Thickness:

Duty Grade: BS 5234: Part 2:1992:

Sound Insulation:

60/60 Minutes (Integrity/Insulation).

BTC 17580F - BRE Report P102396-1011A

Refer to Speedline Specification Clause

122 mm. (At Base Track, Excluding Finishes)

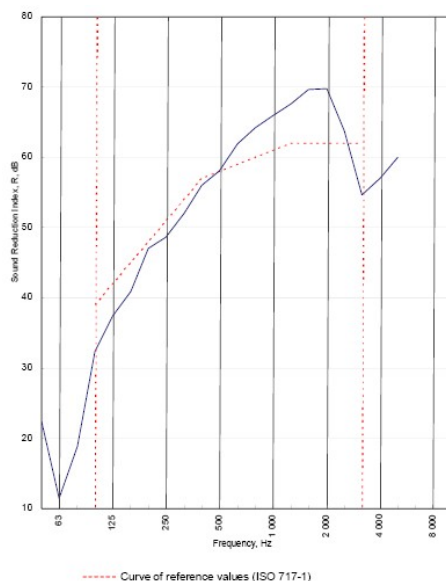
Severe - Annexes A-F

58 R_w dB, -8 Ctr Date Tested or Assessed Against - 30/06/2011

p

Test Code:
H17457AA
Test Date:
30/06/2011

| Freq. Hz | R dB |
|-------------|---------|
| 50 | 22.4 |
| 63 | 11.4 |
| 80 | 18.8 |
| 100 | 32.4 |
| 125 | 37.4 |
| 160 | 40.9 |
| 200 | 47.0 |
| 250 | 48.6 |
| 315 | 52.1 |
| 400 | 56.0 |
| 500 | 58.1 |
| 630 | 62.0 |
| 800 | 64.2 |
| 1 000 | 65.9 |
| 1 250 | 67.6 |
| 1 600 | 69.7 |
| 2 000 | 69.8 |
| 2 500 | 63.8 |
| 3 150 | 54.7 |
| 4 000 | 57.0 |
| 5 000 | 60.0 |
| 6 300 | |
| 8 000 | |
| 10 000 | |



| | | | |
|---|---|-------------------------|------------------------|
| Rating according to BS EN ISO 717-1:1997 | R_w (C;Ctr) = 58 (-3;-8) dB | | |
| | Max dev. 7.3 dB at 3150 Hz | | |
| Evaluation based on laboratory measurement results obtained by an engineering method: | $C_{50-500} = -13$ dB | $C_{50-800} = -12$ dB | $C_{100-5000} = -2$ dB |
| | $C_{150-3150} = -25$ dB | $C_{150-5000} = -25$ dB | $C_{125-8000} = -8$ dB |

TESTED AT ONE OF THE UKAS
ACCREDITED LABORATORIES
BELOW

B.T.C
(H-Ref on Graph)

B.R.E

AIRO

S.R.L



Customer: Metsec plc Hepsec Division

BTC 17457A: Page 9 of 11



SPEEDLINE Drywall Systems, Adsetts House, 16 Europa View, Sheffield Business Park, Sheffield, S9 1XH.

Tel: 0114 231 8030.

Email: enquiries@speedlinedrywall.co.uk

(As per the requirements set out in ISO/IEC 17025:2017 regarding test data the results stated have been carried out by voestalpine Metsec plc as part of the contract to supply Speedline Metal Sections to SIG Plc)